

CREATIVE SOLUTIONS

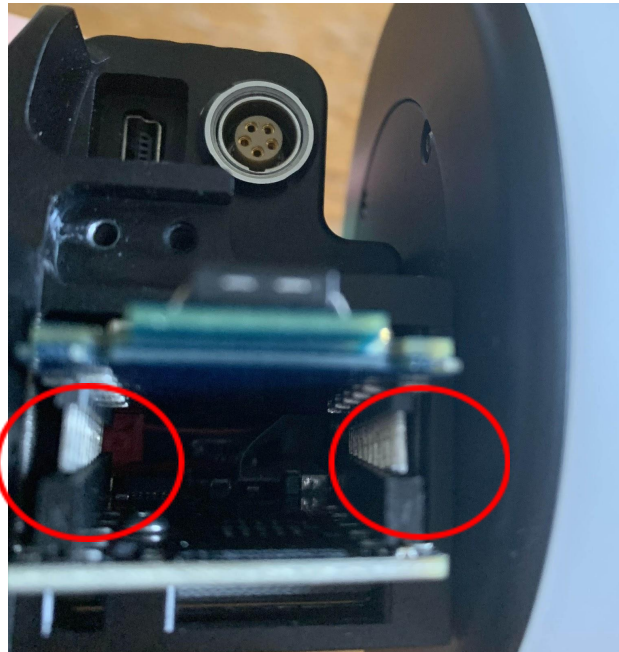
CTRL.1 – Teradek RT – How to – Reseat wireless module

PROBLEM

My CTRL.1 is stuck on channel 55, when I try and change the channel I get a “FAILED” message.

SOLUTION

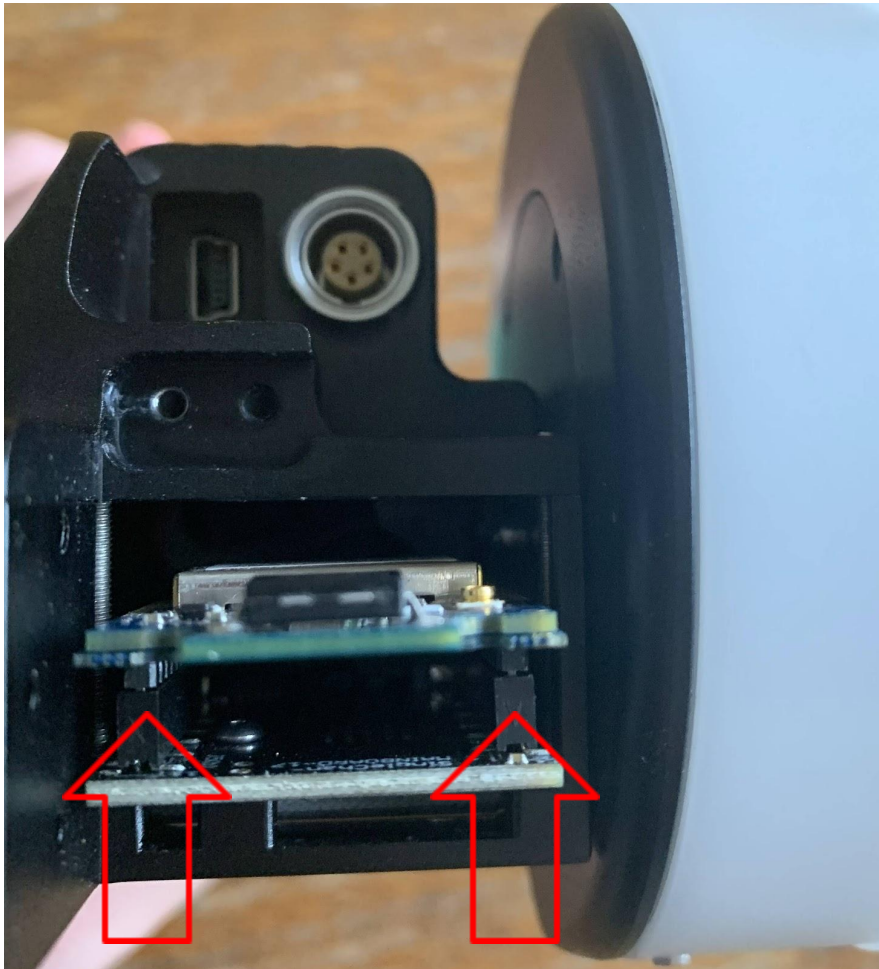
- First you will need a 2mm Allen key to remove the 2 bolts in the antenna cap.
- Once these are out carefully take off the cap



- When you remove the cap you may find the blue wireless module is not in the correct position. The silver legs need to be pushed into housing.

CREATIVE SOLUTIONS

- Gently press the module back into the correct position once it is there you will not be able to see the silver legs



- Power on the CTRL.1 and it will now function as normal.

CREATIVE SOLUTIONS

Keywords

CTRL.1, Channel 55, Can't change channel, RF CONFIG FAILED,

CASE: ZD: 118217

TERADEK WOODEN CAMERA SMALLHD